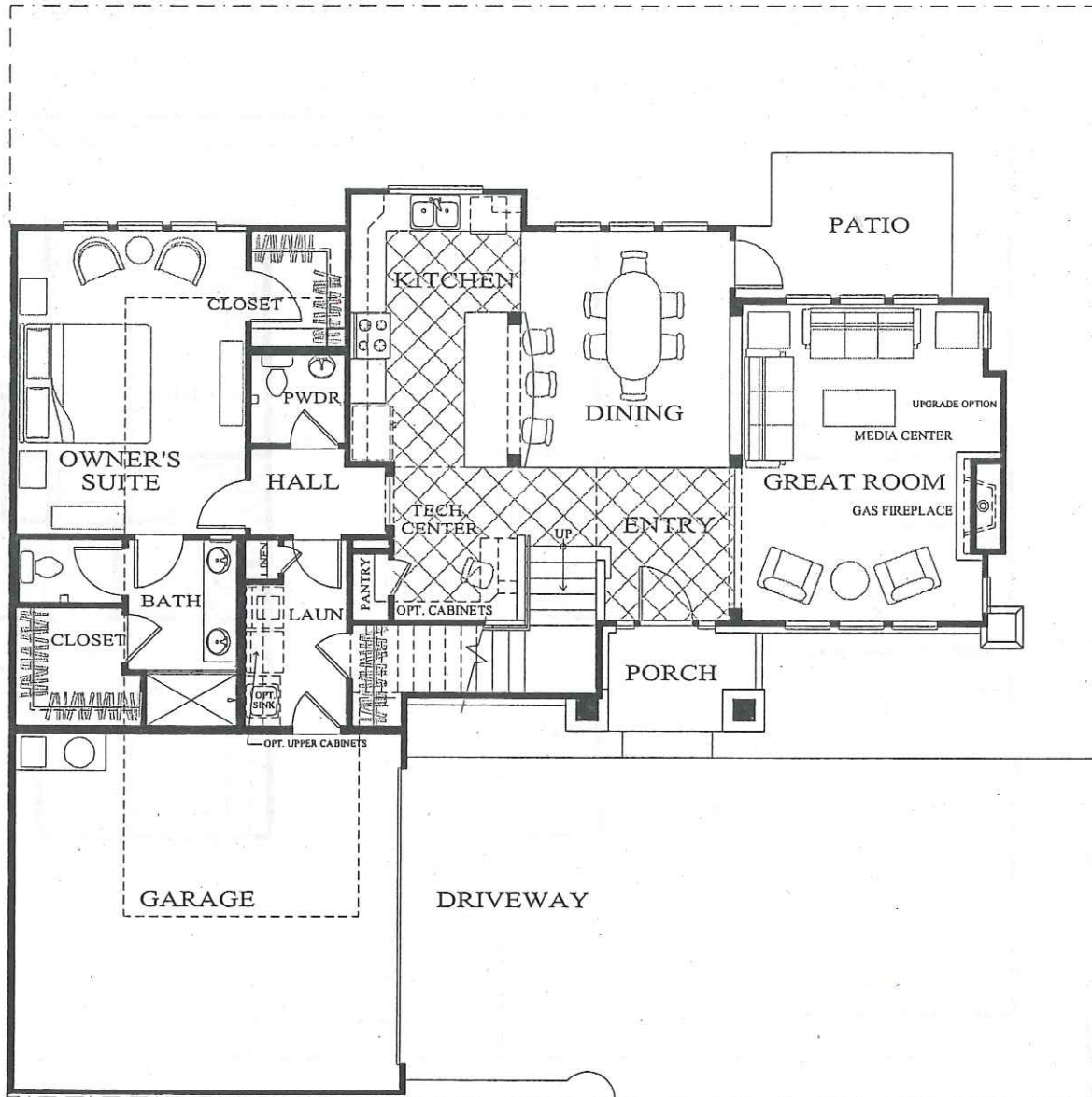


# △ THE PORT COLLECTION △



## MADISON

PLAN 2050 MAIN FLOOR PLAN

1787 SQ.FT

Shea Homes for Active Adults may change home design, materials, features, methods of construction, and price without prior notice. Due to normal construction tolerances, room sizes may vary slightly from those shown in models or on floor plans. Illustrations are artists' conceptions and are not to scale, nor are they intended to show specific detailing. All square footages are approximate. This applies to all illustrated floor plans and elevations.

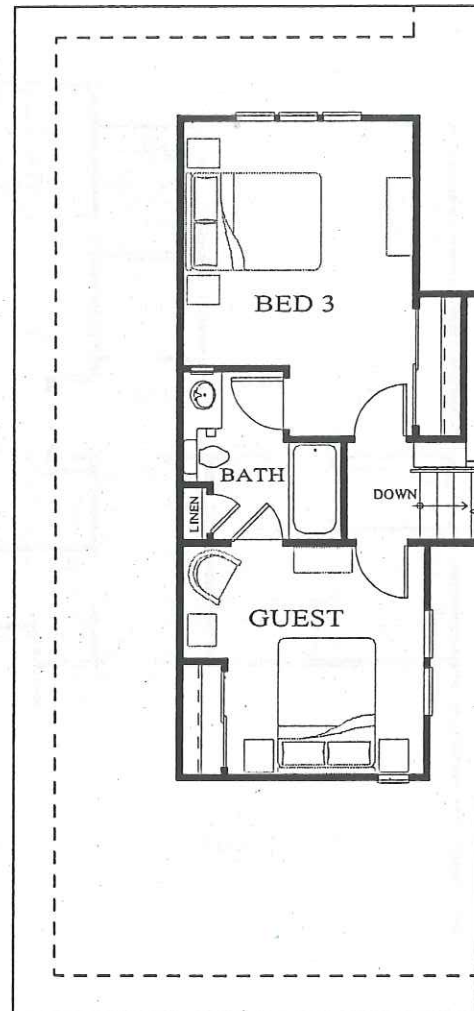
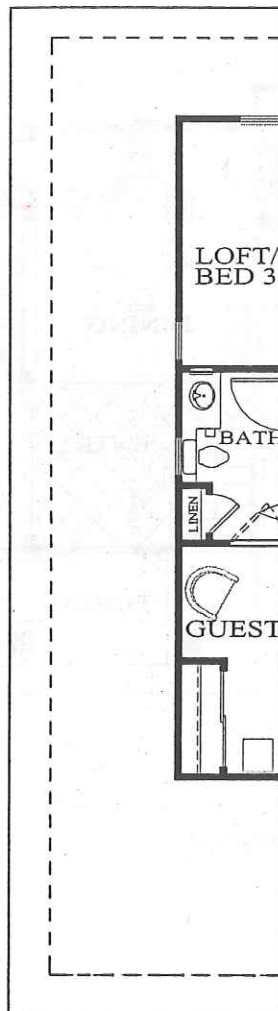
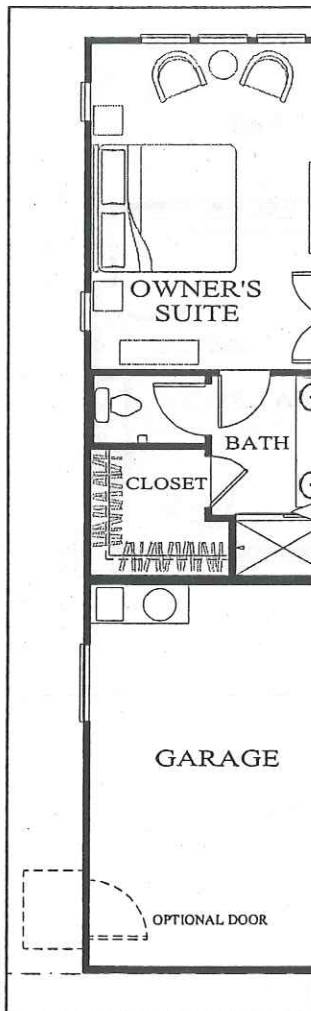
# △ THE PORT COLLECTION △

WINDOW ADDITIONS  
@ FEATURED HOME SITES

3 BED ROOM OPTION

MAIN FLOOR

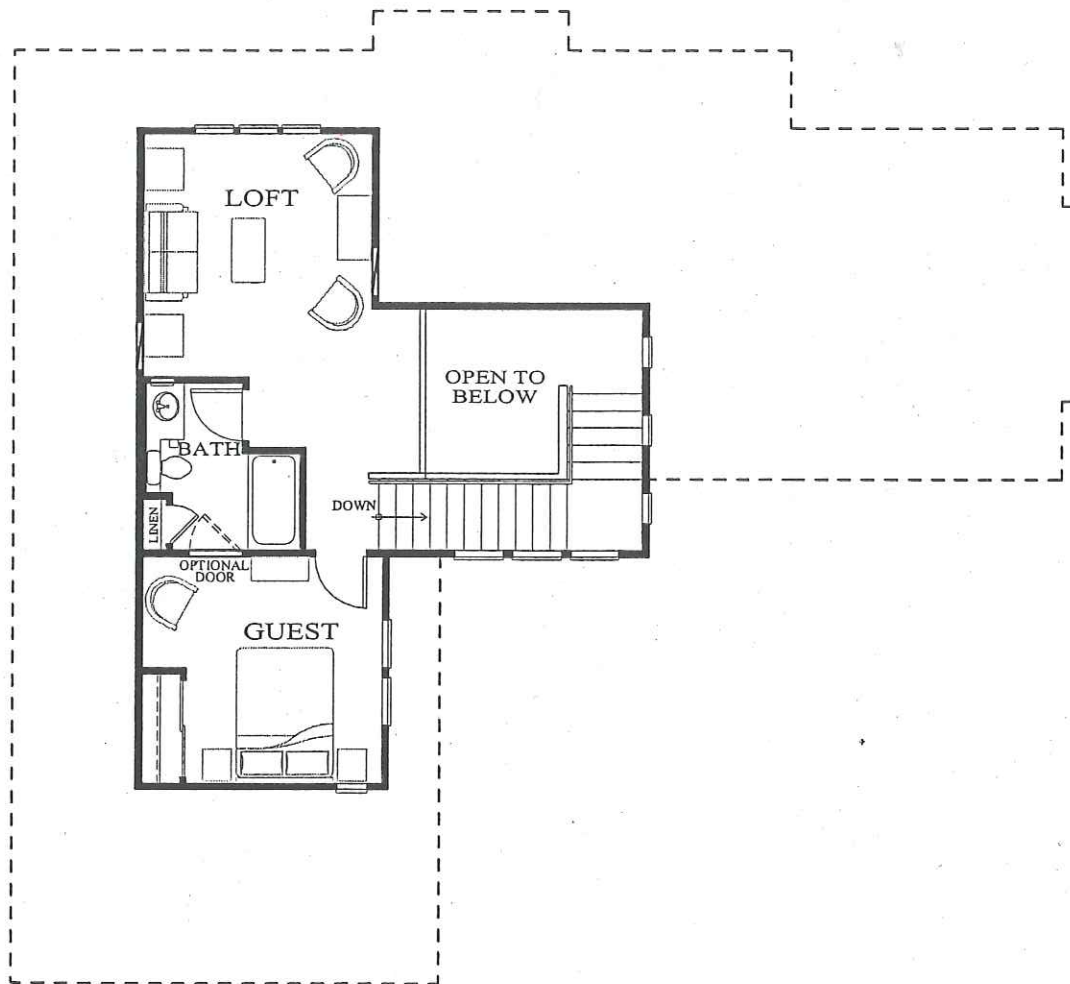
UPPER FLOOR



## MADISON PLAN 2050

Shea Homes for Active Adults may change home design, materials, features, methods of construction, and price without prior notice. Due to normal construction tolerances, room sizes may vary slightly from those shown in models or on floor plans. Illustrations are artists' conceptions and are not to scale, nor are they intended to show specific detailing. All square footages are approximate. This applies to all illustrated floor plans and elevations.

# △ THE PORT COLLECTION △



## MADISON

PLAN 2050 UPPER FLOOR PLAN

Shea Homes for Active Adults may change home design, materials, features, methods of construction, and price without prior notice. Due to normal construction tolerances, room sizes may vary slightly from those shown in models or on floor plans. Illustrations are artists' conceptions and are not to scale, nor are they intended to show specific detailing. All square footages are approximate. This applies to all illustrated floor plans and elevations.